



OUR AI LEARNING JOURNEY

ARTIFICIAL INTELLIGENCE

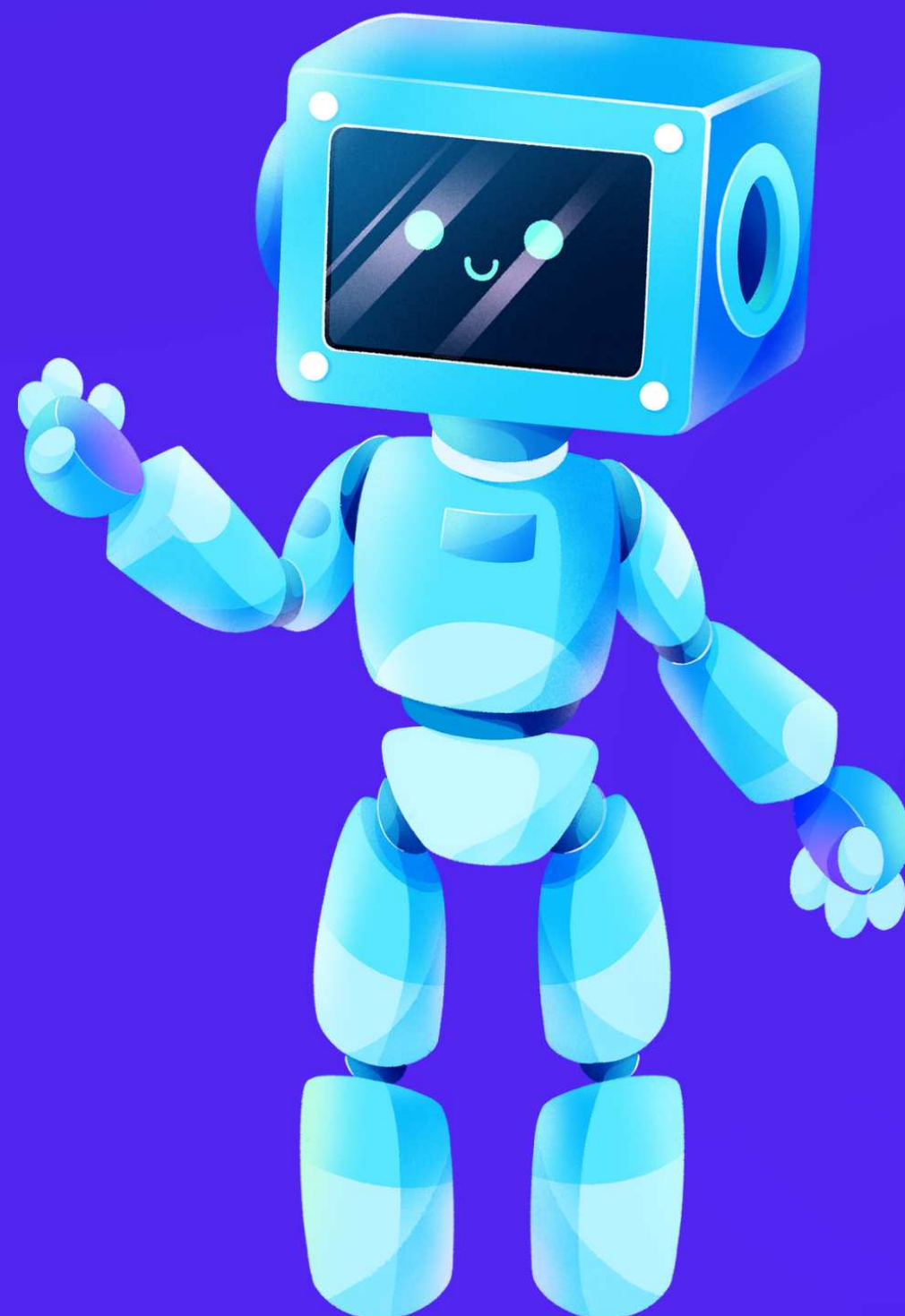


THE IDEA: A MARKING BOT

We noticed a common complain among our teachers within our school as they have devoted countless hours into doing menial labour such as marking worksheets for hours on end, a task AI could easily automate.

METHODOLOGY

We used a makeshift combination of the Photomath API on Github and the patterns they used to mark certain questions (quadratic equation expansion) on math papers over the years



RESULTS

- Based on a sample size of about 50 different papers from various schools on the same type of question there was a 80% accuracy in marking the input given

80%
ACCURACY



CHALLENGES FACED

- Data collection of 50 Papers and finding the questions
- getting multiple answers to the questions both wrong and right
- troubleshooting when the ai spat out errors or wrong results

CONCLUSION

With further time and polish, the could be refined into a model which requires almost no human input when marking worksheets; fully automating the tedious process

